

INSTRUCTIONS FOR FITTING AND MAINTENANCE OF THE LUCAS SUCTION-OPERATED WINDSCREEN WIPER No. 30G

Fitting.

Provided that the following instructions are carefully carried out, no difficulty should be experienced in installing the Wiper.

It is necessary to drill three holes in the windscreen—two for the fixing studs and one for the Wiper arm shaft. It is most important that the sizes and spacing of these holes are in accordance with the diagram on page 7. This diagram is perforated and can therefore be detached and used as a template for drilling.

The centres of the holes should be carefully marked with a centre punch, care being taken that they are in line. It is advisable, before drilling, to check them by measurement, and also to see that there will be sufficient space for the Wiper body when fitted in the position decided upon. For instance, in a touring car, see that there will be a clearance when the hood is up.

It is advisable to drill the holes with a small drill first, say about $\frac{1}{8}$ " , then to use the correct size drills, working from both sides of the screen.

It is not advisable to drill holes through glass of the safety or non-splintering variety. If the Wiper cannot be fitted without doing this, we recommend that the makers of the glass undertake the drilling. After drilling right through frame, countersink the holes from both sides of frame with the correct size drills. If glass does intercept the passage, open out the holes to the correct size with a small round file. It will be found that the filing away of the glass is a simple process if the file is dipped in turpentine.

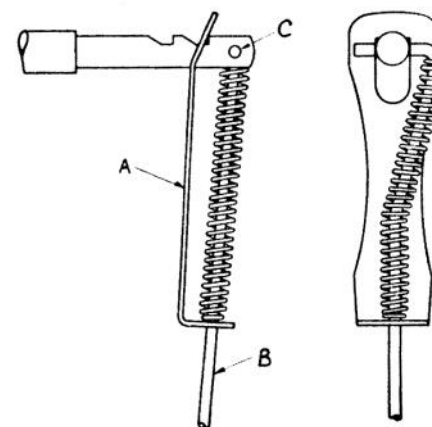
Care must be taken that the centre hole is free from any rubber that is used for packing the glass.

Fit the Wiper on the windscreen, and secure by means of the two fixing screws.

The Wiper arm should be fitted as shown in the illustration. The procedure is as follows :—

Fit the tension plate "A" on the Wiper arm "B" so that its one end is located at the bottom of the spring, and place the other end over the Wiper shaft "C." Then, while compressing the spring, push the end of the Wiper arm through the hole in the shaft. Finally spring the end of the tension plate into one of the grooves on the shaft.

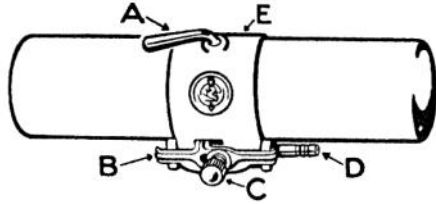
When fitted, the rubber blade should press lightly against the glass, and bend backwards and forwards with each stroke of the arm. Alternative grooves for the tension blade are provided on the shaft, to enable the correct adjustment to be obtained.



METHOD OF FITTING WIPER ARM TO SHAFT.

A. Tension Plate. B. Wiper Arm.
C. Wiper Shaft.

Fit rubber tubing to the Wiper and continue down side of windscreen frame. Tubing should be fixed to frame and chassis by means of the clips provided. Carry the tube by any convenient means to the manifold or carburetter, taking care not to make any sharp bends in tube.



Suction-Operated Windscreen Wiper No. 30G with Control "B" in "On" position.

- A. Hand lever, for use in case of emergency.
- B. Control.
- C. Regulating valve.
- D. Suction pipe.
- E. Lubricate here.

When the Petrol Feed is by gravity or pressure.

Drill, with a No. 28 drill, a hole in manifold or carburetter body, where the suction is most concentrated, but always on the cylinder side of throttle and as near to the latter as convenient.

Place taper end of the small brass tube supplied in hole already drilled, and drive home, fix rubber over tube, and fitting is complete. To avoid any chips when drilling falling into induction pipe, dip drill in thick grease.

Cars fitted with Autovac System.

A fitting is supplied for connecting up to the Autovac. When this is required, the small brass tube must be driven into the small hole on side of Autovac connection supplied.

To operate.

Push the control "B" to the left to start, and then adjust the regulating valve "C" until the speed of the cleaning arm is suitable for the weather conditions; the further the valve is opened, the quicker will be the stroke of the cleaning arm. Once the valve is adjusted it should be unnecessary to alter this setting.

To stop the Wiper operating, simply move the control to the right, when the cleaning arm will be locked in position at the end of its stroke. It is unnecessary to touch the regulating valve when the Wiper is locked.

Maintenance.

About every six months remove the small screw at "E," and through the hole add one or two drops of good quality thin oil, such as is used for sewing machines, typewriters, clocks and other light machinery.

LUCAS SERVICE DEPÔTS

All owners of Lucas equipment are urged to take advantage of the facilities offered by Lucas Service.

For the benefit of the users of our equipment, we have established Service Depôts in all large towns, which are not only at your disposal for repairs, overhauls and adjustments, but to give free advice. If you experience any difficulty with any part of the equipment, do not hesitate to consult us; we shall be only too pleased to be of assistance. The best course to adopt is to call at our nearest Service Depôt, the addresses of which are given below, when the equipment can be examined as a whole.

If it is necessary to replace any part, order Genuine Lucas Spares. It is obvious that only the designers and manufacturers of the equipment are in a position to make replacement parts which will give satisfactory and lasting service.

When corresponding with Depôts, or when ordering spare parts, give the name, model and year of the engine; the unit of equipment; and particular part in question. Units of equipment are identified by letters and numbers stamped or moulded on some part of the article. It is essential to quote this marking to ensure that correct replacements are sent.

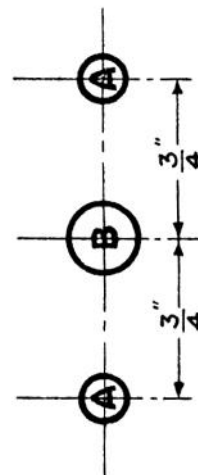
Illustrated spare parts lists are available on application. State year, make and model of engine.

BELFAST	51/55, UPPER LIBRARY STREET
Telegrams: "Servdep, Belfast"	Telephone: Belfast 25617
BIRMINGHAM, 18	GREAT HAMPTON STREET
Telegrams: "Lucas, Birmingham"	Telephone: Central 8401 (10 lines)
BRIGHTON, 4	85, OLD SHOREHAM ROAD, HOVE
Telegrams: "Luserv, Brighton"	Telephone: Hove 1146 (4 lines)
BRISTOL	345, BATH ROAD
Telegrams: "Kingly, Bristol"	Telephone: Bristol 76001 (4 lines)
CARDIFF	54a, PENARTH ROAD
Telegrams: "Lucas, Cardiff"	Telephone: Cardiff 4603 (4 lines)
COVENTRY	PRIORY STREET
Telegrams: "Lucas, Coventry"	Telephone: Coventry 3068
DUBLIN	PORTLAND STREET NORTH, NORTH CIRCULAR ROAD
Telegrams: "Luserv, Dublin"	Telephone: Dublin 72601 (4 lines)
EDINBURGH, 11	60, STEVENSON ROAD, GORGIE
Telegrams: "Luserv, Edinburgh"	Telephone: Edinburgh 62921 (4 lines)
GLASGOW	GRANT STREET (ST. GEORGE'S ROAD)
Telegrams: "Lucas, Glasgow"	Telephone: Douglas 3075 (5 lines)
LEEDS	64, ROSEVILLE ROAD
Telegrams: "Luserdep, Leeds"	Telephone: Leeds 28591 (5 lines)
LIVERPOOL, 13	450/456, EDGE LANE
Telegrams: "Luserv, Liverpool"	Telephone: Old Swan 1408 (6 lines)
LONDON	DORDRECHT ROAD, ACTON VALE, W.3
Telegrams: "Dynamagna, Ealux, London"	Telephone: Shepherd's Bush 3160 (10 lines)
LONDON	757/759, HIGH ROAD, LEYTON, E.10
Telegrams: "Luserdep, Leystone, London"	Telephone: Leytonstone 3361 (5 lines)
LONDON	155, MERTON ROAD, WANDSWORTH, S.W.18
Telegrams: "Luserv, Put, London"	Telephone: Putney 5131 (4 lines)
MANCHESTER	TALBOT ROAD, STRETFORD
Telegrams: "Lucas, Stretford"	Telephone: Longford 1101 (5 lines)
NEWCASTLE-ON-TYNE, 2	64/68, ST. MARY'S PLACE
Telegrams: "Mocolite, Newcastle-on-Tyne"	Telephone: Newcastle 25571 (3 lines)

IN ADDITION THERE ARE OFFICIAL BATTERY SERVICE AGENTS, OFFICIAL SPARES STOCKISTS AND OFFICIAL SPARES DEALERS IN ALL PARTS OF THE COUNTRY.

LUCAS WINDSCREEN WIPERS

Template or Guide for Drilling Holes in
Windscreen Frame.



- A. Fixing Holes $\frac{3}{16}$ in. dia., $\frac{3}{16}$ in. or No. 12 Drill.
- B. Clearance Hole for Shaft, $\frac{5}{16}$ in. dia., $\frac{5}{16}$ in. or Letter O Drill.

HEAD OFFICES AND WORKS: **JOSEPH LUCAS LIMITED, BIRMINGHAM, 19, ENGLAND**